

# PRODUCT SPEC SHEET

MAGITEX DECOR

**Collection:** Spectrum

**Description:** A beautiful weave that offers incredible texture and color. Its anti-stain and antibacterial technology make it wonderfully resistant to spills. Suitable for upholstery use.

**Pattern:** Mount Logan

**Width:** 55 INCHES

**Composition:** 84% Polyester ;14% Acrylic ; 2% Wool

**Usage:** Upholstery, Contract

**Flammability:** CAL 117 ; UFAC -1 ; NFPA 260 ; IMO 8

**Abrasion:** 100,000 Double Rubs

**Direction:** Up The Roll

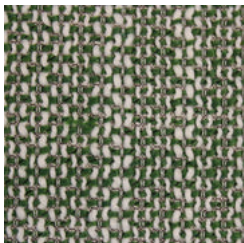
**Weight:** 25 OZ/Linear Yard

**Finish:** Alta

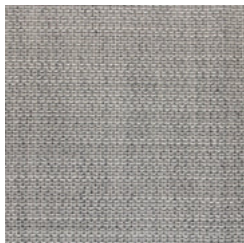
**Water:** AATCC 22 - 100

**Cleaning instructions:** Ws- Spot Clean

## COLORWAYS



Basil



Platinum