

# PRODUCT SPEC SHEET

MAGITEX DECOR

**Collection:** Symphony

**Description:** A luxurious black & white Jacquard bouclé pattern with an irresistibly soft touch. Its anti-stain and antibacterial technology make it wonderfully resistant to spills. Suitable for upholstery use.

**Pattern:** Harmony

**Width:** 55 INCHES

**Composition:** 82% Polyester ; 11% Acrylic ; 5% Cotton ; 2% Linen

**Usage:** Upholstery, Contract

**Flammability:** CAL 117 ; NFPA 260

**Abrasion:** 100,000 Double Rubs

**Repeat:** V:15

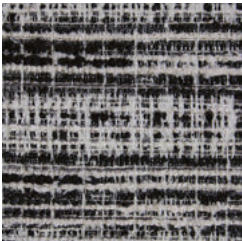
**Direction:** Fabric is Railroaded

**Weight:** 16 OZ/Linear Yard

**Finish:** Alta DWR

**Cleaning instructions:** WS - Spot Clean

## COLORWAYS



Black